

A close-up photograph of a microscope's objective lens and eyepiece, with a blurred background of a laboratory setting. The lighting is dramatic, highlighting the metallic surfaces of the microscope.

## Professional project management in product development



**Thanks to the RPLAN software and ACTANO's efficient and purposeful implementation consulting, companies can master the complexity and heterogeneous constraints of their projects and enhance the quality of their product development results.**

RPLAN helps more than 100 prestigious companies worldwide from the discrete manufacturing industry and their more than 100,000 users to achieve the objectives of their development projects far more systematically – on time and within cost and quality targets.

# Empower – Engage – Enable

The effects can be measured in time, costs, maturity and quality of your product.

## RPLAN e3 – The new dimension in project management

The efficiency effect with RPLAN e3 is generated by

**Empower:** Master complexity by means of collaborative project management

**Engage:** Actively involve all internal and external project participants

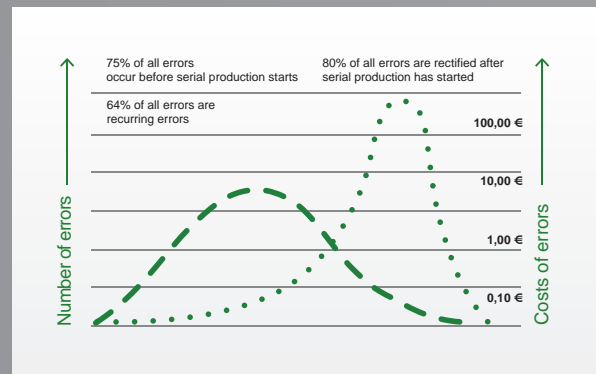
**Enable:** Support cross-company project management efficiently across distributed value added networks

On the basis of collaborative project management, RPLAN e3 integrates internal and external employees, partners and suppliers in value added networks, synchronizing the product development process over all levels and installing a real-time control instrument for

project management across sites and companies. As a result, RPLAN counteracts one of the biggest cost drivers and time eaters in complex development projects: Problems identified too late in the development process.



RPLAN e3 contains all the key functions needed for complete project management and can be scaled to meet your specific requirements



The most expensive conflicts between objectives result from problems that are discovered too late or delayed maturity

## RPLAN e3 contains:

- Schedule Manager, including Offline Client
- Risk and measure management
- Maturity management
- Virtual project workspace
- myRPLAN
- Reporting
- Presentation Graphics
- API
- CCP Cross Company Planning

# Empower:

## How does RPLAN e3 help you master complexity?

### Consistency and transparency thanks to collaborative project management

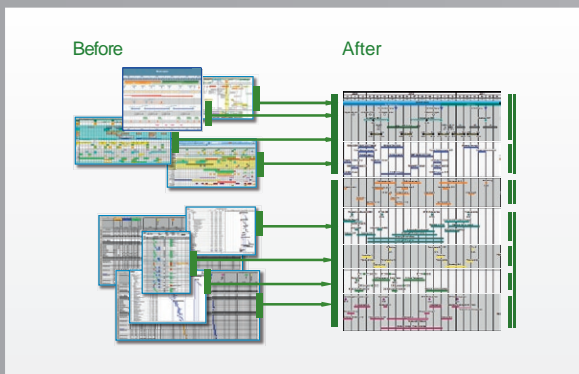
The key to handling complex parallel processes is to split them into decentralized, “tangible” subsystems and delegate them. These clearly allocated subschedules, for which defined staff are responsible, are linked into

a planning network which shares a common database by means of intelligent communication and information modules, creating end-to-end, consistent and transparent project management throughout the company.

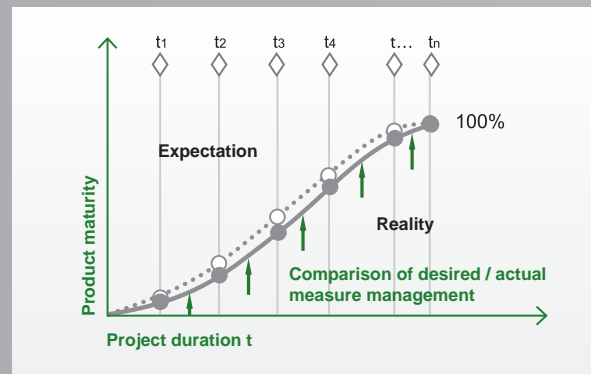
### Active communication and cooperation

Unlike traditional PM tools, where a change in date may cause automatic and uncontrolled shifts in the project schedule, RPLAN generates a notification to the affected project members, who then actively agree on the

best solution for the situation at hand. The result is genuine cooperation and commitment among the persons involved.



RPLAN e3 establishes end-to-end project management throughout the company



Integrated maturity level tracking in RPLAN e3 ensures measures are taken in good time

### From scheduling to project control

Thanks to integrated risk and maturity management and the means of defining and tracking goals, RPLAN e3 offers an early-warning system for deviations and risks. As a result, the typical situation where responses come too late, entailing high consequential costs, is re-

placed by proactive measure management. That enables companies to achieve their maturity and quality objectives and move from pure scheduling to active project control across all levels.

### Professional implementation

Backed by their industry expertise and project management experience, the consultants from RPLAN Advisory Services ensure the solution’s efficiency, acceptance

and sustainability and so measurably enhance the quality of product development results.

# Engage:

## How can all internal and external project participants be integrated actively with RPLAN e3?

### From the milestone schedule to the work package

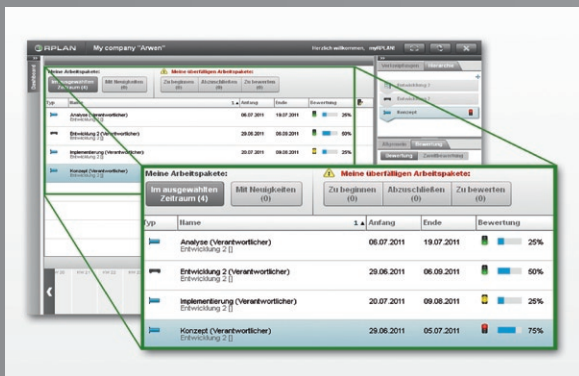
Integrated project planning and control with RPLAN e3 means: From higher-level milestone planning down to the detailed work package, project employees are assigned their specific area of responsibility. The team

members plan and work independently within the specified limits; their specialist expertise is thus integrated – a crucial aspect in permitting prompt identification and resolution of problems.

### Managing heterogeneity

The RPLAN API is the basis for technical integration of RPLAN in the IT landscape. Alongside this, an efficient planning structure is naturally vital to mastering heterogeneous factors in a company. Our experts specialize

in harmonizing workflows and processes in distributed development and generating measurable value added in customers' project management thanks to their know-how.



myRPLAN gives everyone involved in a project a personalized view of his or her work packages and tasks



Numerous reporting options from a database ensure excellent quality and presentation of information

### myRPLAN: Integration of all levels

It is important for project management to be firmly entrenched throughout the company and for all project participants – from the person responsible for a milestone to the activity level – to be systematically provided with the information required for the respective role and task area. To enable this, RPLAN offers personalized, role-based overviews in myRPLAN: They systematical-

ly show all the personal tasks and reports and their context. As a result, feedback on the degree of completion, risks or forecasts is received directly from the person responsible, without having to pass through hierarchical structures first. That means the effort involved in coordination is slashed, decision-making paths are shortened and project work is sped up.

### Presentation and availability of project data to suit needs

Whether for regular coordination in the team or for informing management, RPLAN e3 offers reports that summarize and analyze all project data. Data is format-

ted graphically to deliver a perfect presentation in PowerPoint format at the touch of a button using the integrated Presentation Graphics function.

# Enable:

## How does RPLAN e3 establish cross-company project management and efficient Management across distributed value added networks?

### Product development without boundaries

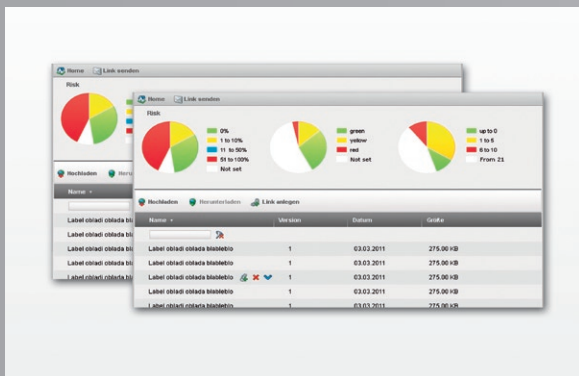
All the features of collaborative project management are also available to permit cross-company integration of partners and suppliers. Communication and interaction dispense with typical problems at the interfaces between departments and companies, such as isolated planning islands, redundant data maintenance and information

loss. Schedule data is synchronized across company boundaries and integrated in project planning to create an end-to-end, coordinated value added network. The technical requirements are so simple that even „non-industrial“ partners are integrated smoothly.

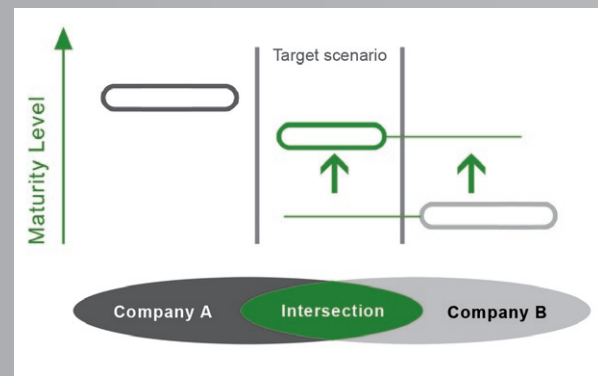
### IT integration

In order for distributed value networks to provide the required results, RPLAN makes it possible to display different integration models of external partners: from

the simple status feedback of a supplier via myRPLAN through to cross-workspace planning synchronization in a cloud environment.



Dashboards offer overviews, for example for overdue tasks and milestones, negative forecasts or new risks



RPLAN enables ad-hoc collaboration across companies, even between partners with different maturity levels

### Shared project workspace

Whether people need to collaborate across teams, sites or companies, the required documents must be available to everyone involved. RPLAN Collaborative Workspace makes a project workspace available for joint editing and coordination of important documents. The

project workspace is secure and can be accessed from any location. As a result, barriers in coordination and decision-making processes are eliminated. Agility, communication and document security are to the fore.

### Efficient integration of all stakeholders

The most expensive conflicts between objectives result from mistakes or gaps in cross-company collaboration. Founded on many years of experience, ACTANO Advisory Services offer a tried-and-tested best-prac-

tice approach for status analyses, basic concepts and procedures in cross-company project management and boost efficiency and quality for the customer throughout the distributed value chain.

**ACTANO's customers include Airbus, APOLLO Vredestein, Audi, BMW, Daimler, EPI Europrop International, General Motors, GETRAG, HuF, IAV, Leobersdorfer Maschinenfabrik LMF, Magna Steyr Fahrzeugtechnik, MANZ Automation, Mini, Mitsubishi Fuso Truck & Bus, Motorenfabrik Hatz, MTU Aero Engines, Rolls Royce Deutschland, smart, ThyssenKrupp Presta, VW, ZF Getriebe and many more.**

**ACTANO has entered into partnerships with leading solution providers and consultancies such as HP, SAP, Siemens PLM, PTC and MHP. The company has its head office in Munich, Germany and subsidiaries in Stuttgart, Wolfsburg, and Detroit.**

Contact:

ACTANO GmbH

Paul-Heyse-Strasse 26-28

80336 Munich

Germany

Phone: +49 (0)89 / 20 60 44 0

Fax: +49 (0)89 / 20 60 44 299

e-mail: [info@actano.com](mailto:info@actano.com)

[www.actano.com](http://www.actano.com)